



*Millionaires*  
ENCLAVE



A Project by :



**SAVITRI & MILLIONAIRES GROUP**  
BUILDERS & DEVELOPERS



# *Millionaires* ENCLAVE



## PODIUM AMENITIES



CHILDREN PLAY AREA



GYMNASIUM



INDOOR GAME



LIBRARY



MASSAGE ROOM 2



MASSAGE ROOM



MEDITATION ROOM



MINI THEATRE



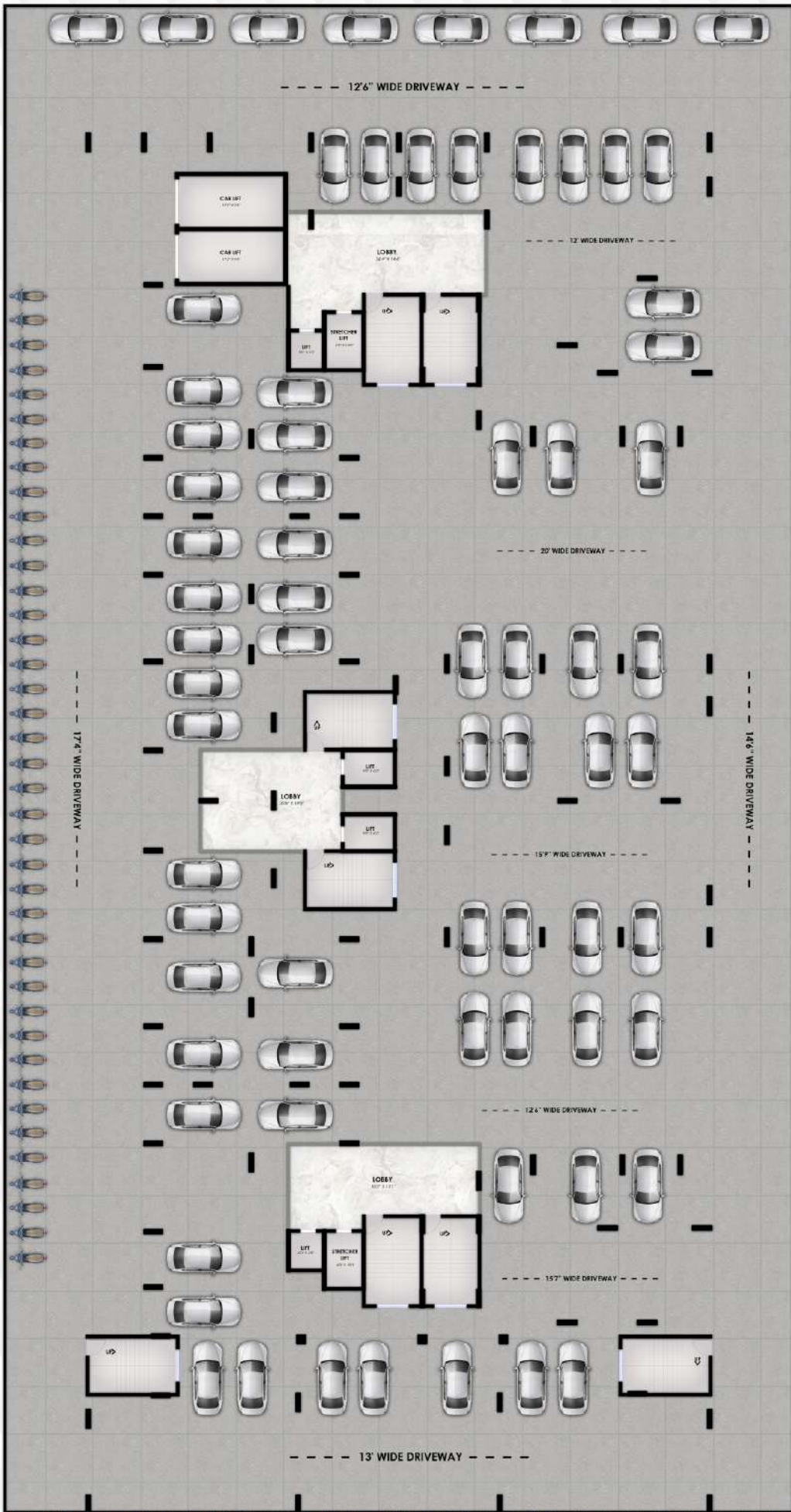
PLACE FOR SENIOR CITIZEN



SWIMMING POOL



TEMPLE

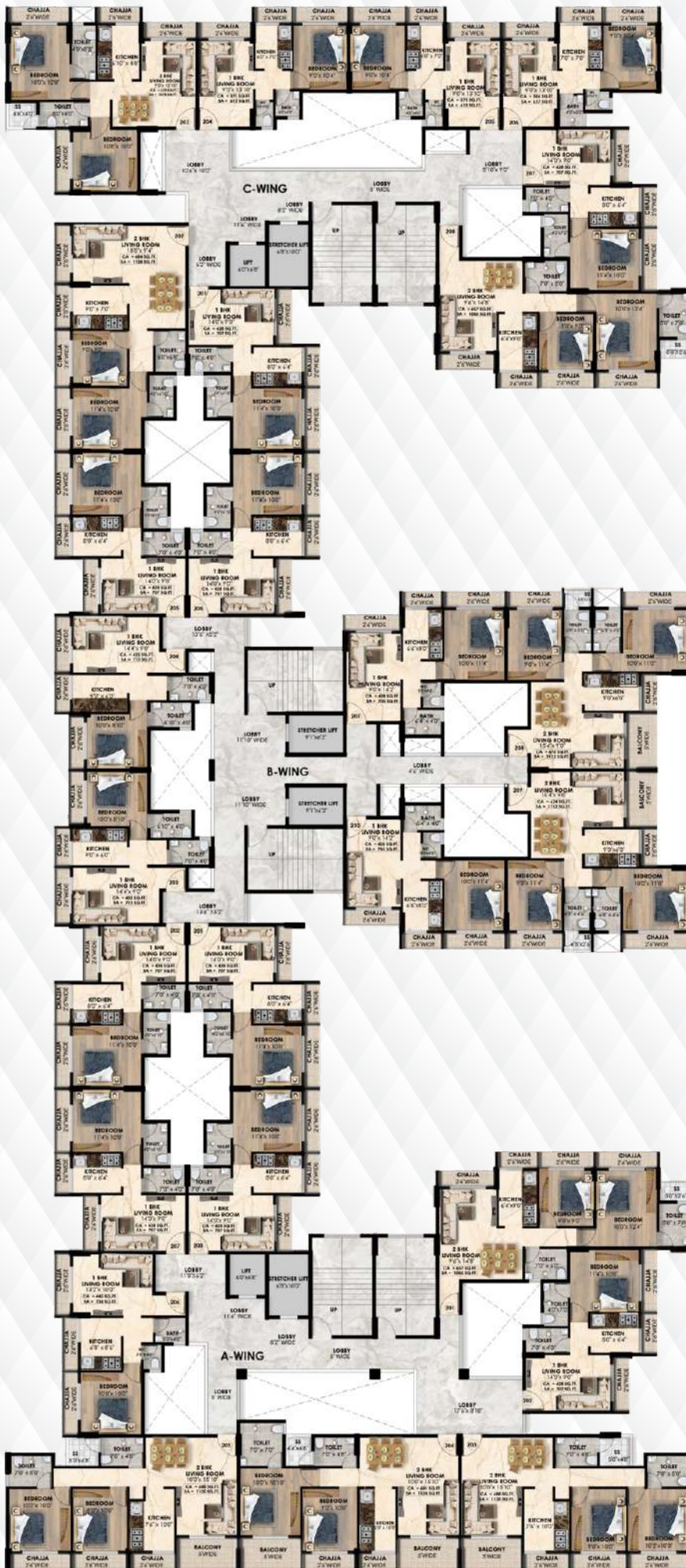


**BASEMENT FLOOR PLAN**





**PODIUM FLOOR PLAN**



**2ND TO 12TH TYPICAL FLOOR PLAN**

# LOCATION MAP



## Project Features

- Clear Title CIDCO Rehab Plot.
- Road Road Connectivity.
- Proposed International Airport Nearby
- Quality Construction with Earthquake Resistance.
- RCC Frame Structure.
- Excellent Planning with Good Lighting & Ventilation.
- Functionally & Tastefully Designed Flats with Modern.
- Planning Development with Infrastructure by CIDCO.
- Lavish and Spacious common Passage Decorative Entrance Lobby.
- School, College, Hospital, Malls, Banks & ATN Nearby.
- Branded life, Decorative Lobby, Intercom & CCTV camera.

## Location Advantages (Drive Away)

- Upcoming Navi Mumbai Airport - 5 min.
- Khandeshwar Railway Station - 10 min.
- Panvel Railway Station - 12 min.
- Upcoming Trans harbour Link - 7 Min
- Mumbai Pune Expressway - 2 min.
- MGM College and Hospital - 10 min.
- Karnala Sports Academy - 10 min.

## Upcoming Features

- Schools, Restaurants, Petrol Pump, 5 Star Hotel
- D mart, Shopping Mall, Fire Station.
- Multi - Purpose Stadium.
- Bus Depot Next to the Project.
- Market Complex Next to the Project.

Architect



**VASTUYOG ARCHITECTS**

Mobile : 9022442281, 8108440206

A Project by :



**SAVITRI & MILLIONAIRES GROUP**

BUILDERS & DEVELOPERS

Office Add : Plot No.27, Sector- R5, Pushpak Node, Karanjade, Panvel

**9082155124 / 9322482021 / 7021400402**

DISCLAIMER: The plans, specifications, images and other details herein are only indicative and subject to approval of the concerned authorities. The Developer/ Owner reserves the right to change any or all of these in the interest of the development, under compliance with the norms of the The Real Estate ( Regulation and Development) Act, 2016. Artist's impressions are used to illustrate amenities, specifications, images and other details and these may be applicable to select apartments only.